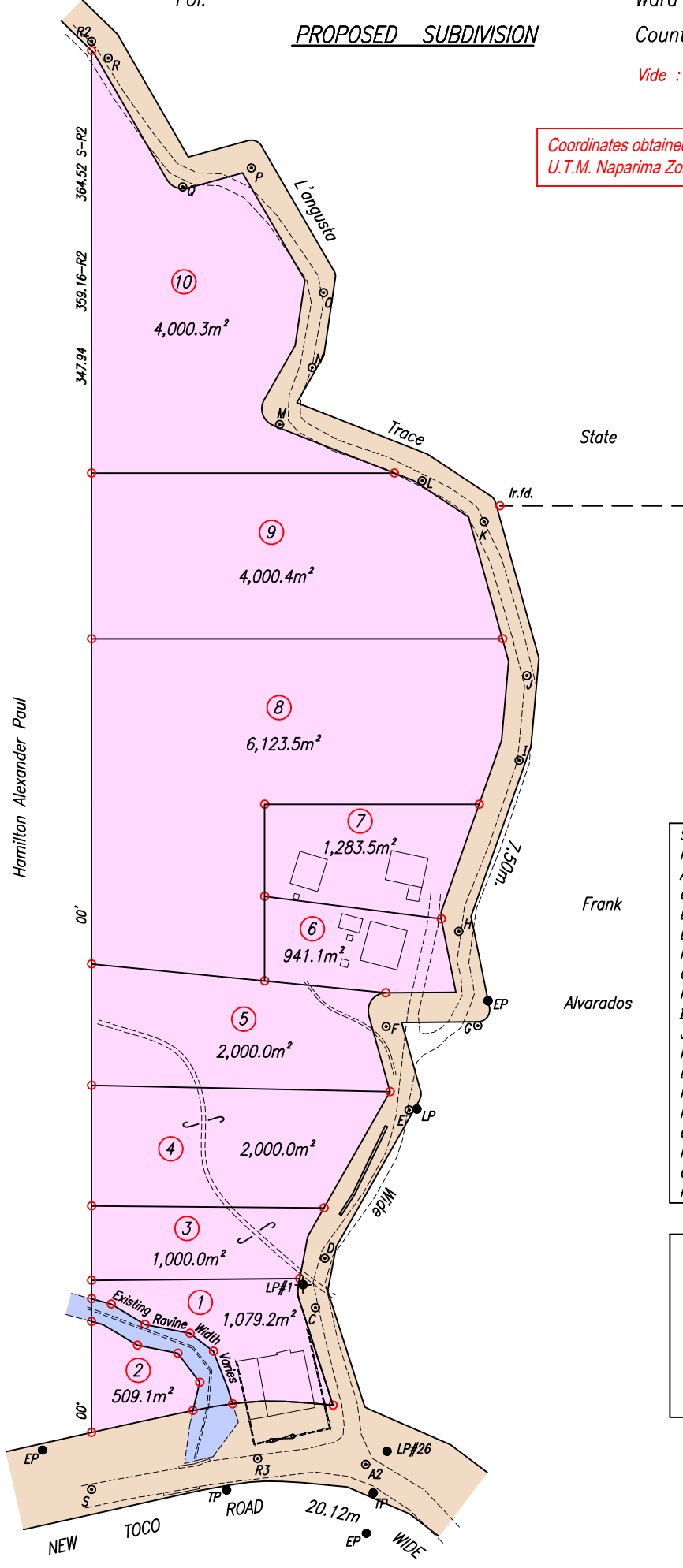


Vide : Bk.206/103  
Bk.1223/43

Coordinates obtained by Hand Held GPS  
U.T.M. Naparima Zone 20P +/- 5m



**LEGEND**

S - R3	79° 33'	42.55
R3 - A2	93° 00'	27.20
A2 - C	342° 13'	41.41
C - D	10° 48'	12.67
D - E	29° 36'	42.95
E - F	344° 30'	21.79
F - G	89° 31'	23.09
G - H	348° 38'	24.26
H - I	19° 26'	45.67
I - J	05° 11'	21.42
J - K	344° 26'	40.17
K - L	303° 30'	18.67
L - M	291° 31'	38.54
M - N	29° 43'	16.56
N - O	08° 33'	19.09
O - P	329° 54'	36.23
P - Q	254° 31'	17.90
Q - R	330° 01'	37.52
R - R2	314° 31'	5.93

EP ●	Electricity Pole
LP ●	Light Pole
□	Structure
---	Wall
- - - -	Ravine
- - - -	Existing Road

PLAN of a Parcel of land coloured pink in the Ward of Matura  
Containing together two point three two zero seven hectares  
Prepared by me, with due authority, in February 2024 for Bindra Dolsingh

SCALE 1:1500  
Distances are in metres

Checked by. . . . .

Entered on. . . . .

Trinidad & Tobago Land Surveyor. . . . . 8th February, 2024.  
FILE PATH = NAFL D:\2024\BINDRA DOLSINGH-LANGUSTA BALANDRA\BINDRA DOLSINGH\_LANGUSTA\_REV 0